



Concepts

Products

Service

A healthy perspective for the environment.

Lindner Clearance of Harmful Substances



Lindner

Building New Solutions

Building new solutions.

Lindner undertakes major worldwide projects in all areas of interior finishes, insulation technology, industrial services and building facades. From pre-planning through to project completion Lindner is your partner of choice.

The Company's extensive manufacturing capability enables quality to be strictly maintained whilst allowing maximum flexibility to meet individual project requirements.

Environmental considerations are fundamental to all Lindner's business principles.

Through partnerships with clients Lindner turns concepts into reality.

Choosing Lindner you have:

Lindner Concepts:
Tailored solutions specifically geared to satisfy individual project requirements

Lindner Products:
Quality materials and systems to the very highest industry standards

Lindner Service:
Comprehensive project management services

Contaminant-free at last.

Our know-how for your well-being.

The best conditions for your reference project:

- Many years of experience – in the business since 1988
- Highest safety and environmental standards
- Successful implementation of Green Building principles
- Ultra-modern technology
- Extensive capacity for large projects
- Partnership with a successful company
- Exemplary adherence to deadlines

Create a healthy habitat.

Only in a healthy environment can we feel complete and fulfilled. It is therefore important that living and working spaces are free of pollutants otherwise they can harm organisms and lead to long-term illnesses. The analysis of building material samples and air quality provides prompt information on whether the legal limits have been exceeded and whether renovation must be carried out.

Create a contaminant-free environment in your buildings. With our extensive knowledge we will be happy to help you.

Lindner Clearance of Harmful Substances offers you:

- Excellent planning know-how
- Large numbers of qualified specialists
- Fast, professional implementation
- An exclusive partner network
- Complete support and special services

The most common hazardous materials include asbestos, mineral wool (KMF), PCB, DDT, PCP, PAH, formaldehyde and moulds. We ensure thorough removal that will enable you to use your entire building once again.

Where can hazardous materials appear?

① Asbestos

Sprayed asbestos (steel girders), textiles, foam, panel lagging, vinyl floor panels, boards, cords

② Mineral wool (KMF)

Impact sound insulations, sprayed insulation, loft conversions, acoustic ceilings, partition walls, floor boards, facades

③ PCB

Coated ceiling panels, paints, varnishes, adhesives, joint sealants, condensers

④ Lindane/PCP/DDT

Wooden fixture, wall paints

⑤ PAH

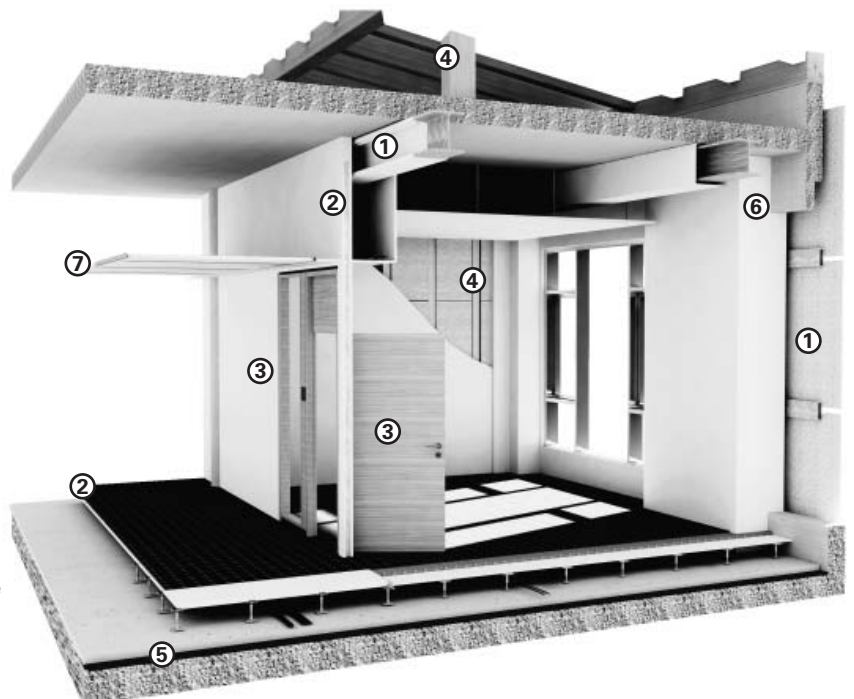
Adhesives containing tar and pitch, bituminous sheeting, moisture barriers

⑥ Moulds

Damp areas, water damage, constructional damage

⑦ Formaldehyde

Foam, adhesives, sprays, wallpapers, chipboard lagging, acoustic ceilings





HypoVereinsbank, Munich

Removing hazardous materials responsibly. Since 1988.

Benefit from the years of experience and competence of one of Germany's leading companies for the removal of hazardous materials with controlled demolition.

Thanks to state-of-the-art technology we can restore all buildings safely and sustainably – for the benefit of our customers, our staff and the users of the affected building. When carrying out our work we can refer to decades of experience; as a founding member of the Professional Association for Asbestos Decontamination (Fachverband für Asbestsanierung) we are one of the first companies in Germany which has successfully dealt with this issue. We have also contributed significantly to the development of today's working techniques and hazardous materials guidelines – for example in planning the Technical Regulations for Hazardous Substances (Technischen Regel für Gefahrstoffe).



We are a founding member of the Fachverbands für Asbestsanierung (Professional Association for Asbestos Abatement).

Lindner

Environmental Management:

An example of sustainability.

We work with an integrated management system which comprises quality, environmental and safety management in all processes. It encompasses certifications such as DIN ISO 9001, DIN ISO 14001 and SCC and we are continually developing it. This puts us in a position to satisfy the continuously growing demands for renovation projects – for example with regards to Green Building Standards and the revitalization of buildings.

Cleaner environment – healthier people.

In all processes we place enormous value on ecological and economical renovation to specifically reduce the level of contamination on people and the environment. Additionally we also increase the efficiency of energy and raw materials use. With our Green Building competence we contribute significantly to the certification of buildings –

especially to national and international standards as set by the DGNB (German Sustainable Building Council) and LEED (Leadership in Energy and Environmental Design).

Renovating safely when necessary.

The most important thing for us is the protection and safety of all those involved. Thanks to our integrated safety system we protect staff, as well as users of the affected building, from health hazards.

We focus on recycling.

With innovative recycling concepts we provide optimal material reutilisation and contribute to the sustainable protection of natural resources. During the development and manufacture of our products the use of recycled materials is also a high priority.



Lindner is a certified specialist for the removal of hazardous materials according to SCC, DIN ISO 9001 and, since 2009, according to DIN ISO 14001.



Thanks to our LEED competence we enable certifications by the US Green Building Council (USGBC).



We are founding members of the German Sustainable Building Council (DGNB).



Renovation of contaminated plastering in maintenance shafts

Begin your future in a healthy environment.

We can provide you with our own staff, quick response times and a partnership with a financially-strong company: for all sorts of renovation projects from small to large-scale.

We are well equipped to carry out your renovation project with high numbers of qualified staff, highest safety standards as well as excellent technical know-how and special equipment. We guarantee a smooth and on schedule project process. On the following pages you will find further detail.

Our know-how for your safety.

With us you can rely on safe, professional and economic processes so that you can move back into your rooms sooner rather than later.



Thorough preparation on-site.

During renovation work certain safety measures are indispensable. Before work starts, working areas are separated with foil walls and all openings such as floors, walls and ceilings are carefully sealed. This ensures that no contaminants escape and no risk of harm exists for users of the building.

Protective measures on the building site.

During renovation the working areas are only accessible via so-called "personnel locks". In addition we use special material locks for transporting old building materials. Our staff wear special protective clothing so that they are not at risk. As safety is of the highest priority during decontamination, specially designed suction devices contain the contaminants within the area being renovated.





Clearance measurement and installation of replacement materials.

Once all contaminants have been removed, we begin the clearance measurement of the renovation areas with officially approved institutions. Afterwards the approved new materials can be installed.

Complete removal of all hazardous materials.

During asbestos removal high-vacuum suction devices ensure that any remaining materials are removed from the renovation area and create the required low pressure. Even the smallest of particles are removed thanks to measures such as primary and precision cleaning, binding left over fibres and air exchange.



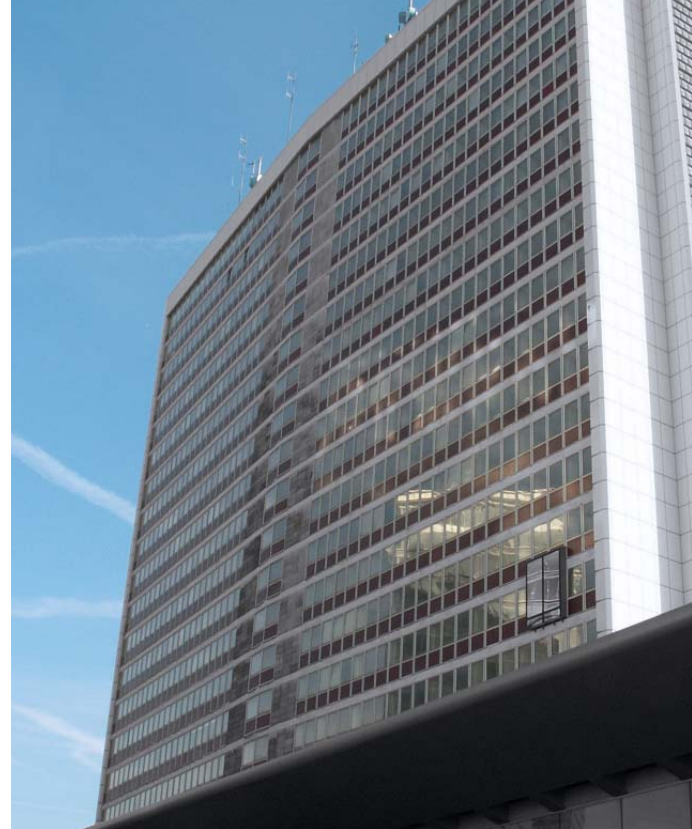
Professional disposal.

Contaminants such as asbestos, KMF or PCB are all wastes which require certification of disposal. We take care of professional transportation and disposal and also obtain the necessary licenses for you. For transportation we only commission approved and reliable specialist companies. These companies dispose of the material at approved depots and in incinerators for special rubbish. Alternatively we recycle some of the material, such as KMF, in special preparation plants.

ELBTUNNEL HAMBURG



Impressive references.



New Elbe Tunnel, Hamburg

Due to abrasion to, and weathering of, asbestos components, the risk of asbestos dust was increased. Renovation measures were therefore put in place.

As a certified specialist to TRGS 519, we removed the sprayed asbestos from the tubing segments and replaced the fire protection materials. So as not to disrupt the motorway traffic for too long, we carried out all services in multiple shifts.

Far up north, deep below the Elbe.

The New Elbe Tunnel, built in 1975, is the most important motorway tunnel in the region and is used by up to 150,000 vehicles every day. It passes under the Elbe between the districts of Othmarschen and Waltershof – with an entire length of 3,325 metres it is the longest underwater tunnel in the world.

Details and facts of the renovation work:

Order amount: € 33.5 million

Hazardous materials removed: Sprayed asbestos and KMF

Types of waste: 10

Execution period: 18 months

Tower block, Alcide de Gasperi 1, Luxembourg

Following the removal of asbestos and other hazardous materials we then gutted the premises. The area requiring work was an impressive 28,000 m². For this project relevant German guidelines were used as a basis to ensure a maximum level of quality.

From the seat of European institutions to conference centres.

Before its renovation, the tower block Alcide de Gasperi 1 belonged to the conference centre of the European authorities building complex in Luxembourg. The building was named after Alcide de Gasperi (1881 - 1954), the Italian statesman and politician who was instrumental in the foundation of the European Community.

Details and facts of the renovation work:

Order amount: € 3 million

Area of renovation: 28,000 m²

Hazardous materials removed: Asbestos, KMF, PAH

Entire amount of waste: 2,000 tons

Types of waste: 13

Execution period: 15 months

Dresdner Bank tower block, Frankfurt am Main

In the Dresdner Bank building we carried out renovation and also gutted the interior. Between January to July 2009 we have removed and disposed of around 10 different types of waste.

The Silver Tower: Frankfurt's shiny giant.

„The Silver Tower“ – this name was coined for the Dresdner Bank tower block because of its aluminium exterior facade. The tower is made up of four individual structures. An architectural characteristic of the building can be seen in its rounded edges which are also noticeable in the finer details. At 166 metres high the skyscraper is an imposing feature of the Frankfurt skyline and impresses visitors from all over the world.

Details and facts of the renovation work:

Order amount: € 1 million

Hazardous materials removed: KMF

Types of waste: 10

Execution period: 6 months





The University of Wuppertal

As part of the reorganisation of its faculties, the university commissioned renovation works on various parts of its buildings. We not only carried out the disposal of KMF, PCB and PAH but also removed asbestos. We removed asbestos-contaminated cords from walls, ceilings and pipelines as well as asbestos wool from wall ducts and other apertures. As a result we provided fire protection solutions in all affected areas. All this took place during renovation work; therefore it was essential to remain particularly aware of the requirements of the building's users throughout the project.

Always top of the class.

The University of Wuppertal was founded in 1972. It offers an unusually large range of different degree programmes which allows students to make unconventional subject combinations. Above all the University of Wuppertal has made a name for itself in start-up incentives and they are regularly top of the German university league tables.

Details and facts of the renovation work:

Order amount: € 1.8 million

Hazardous materials removed: Asbestos, KMF, PCB, PAH

Types of waste: 15

Execution period: 17 months

Berlin State Library, Haus Potsdamer Strasse

The challenge of this project was to reconstruct asbestos-contaminated ventilation ducts over an area of 20,000 m² whilst the library was still open to the general public. Every day approximately 2,800 people visit the building on Potsdamer Platz. In order to ensure that all important working areas can remain open for the duration of the project, the renovation works have been scheduled to take place over many years. This means that the clearance works have to be carried out with particular caution and we are therefore continually updating library visitors and staff on the ongoing work. The order amount is in the region of € 6.5 million.

In the heart of Berlin: Germany's largest universal research library.

The Berlin State Library is a facility of the Prussian Cultural Heritage Foundation and the largest academic universal library in Germany. Due to the quality of its collection it also has an excellent international reputation. The library is contained in two buildings. The building in Potsdamer Strasse was constructed between 1967 and 1978 according to plans by Hans Scharoun (1893-1972) who also designed the Berlin Philharmonie situated not far from Potsdamer Platz.

Details and facts of the renovation work:

Order amount: € 6.5 million

Hazardous materials removed:

Sprayed asbestos,
asbestos-contaminated panels, KMF

Types of waste: 10

Execution period: 5 years



Perfect projects thanks to perfect planning.

From project-related consultation to professional disposal – we put together the services you require, either individually or as a 360° package, enabling you to benefit from fewer interfaces and more economical processes. Contact us: we will be glad to carry out your entire general planning.

Step by step to the best result. Lindner Project Planning.

A renovation project requires precise preparation of the building site so as to ensure the safety of staff and users. We carefully plan every working stage – for example with detailed plans, sketches, technical solutions, building site logistics and deadline monitoring.

Our strength – Building New Solutions.

We continually optimise our methods and our equipment and adjust them to fit our projects. This doesn't just go for renovations – during all construction projects we are always on hand, with our Research and Development department, to assist you. Our designers, technicians and engineers create innovative solutions for offices and special rooms.

Great expectations for renovated rooms: Lindner Products.

Have you already planned how to design your rooms after renovation? We will be glad to assist you – we are also your partner of choice when it comes to interior fit-out, insulation technology and industrial services as well as facade construction. Based on your ideas we manufacture ceilings, walls, floors, facades, doors and much more. Numerous production facilities worldwide ensure that system solutions and customised solutions are available in the shortest time possible.



We can do it all for you.

Lindner Concepts:

- insulation engineering and industrial service
- clearance of harmful substances
- clean rooms
- airports and airlines
- railways and tunnels
- studios and cinemas
- interior fit-out and furnishings
- cruise liner and ship fit-out
- specialist dry lining
- general contracting
- Public-Private Partnership (PPP)

Lindner Products:

- facades
- ceiling systems
- lights and lighting systems
- partition systems
- doors
- floor systems
- heating and cooling technologies

Lindner Service:

- general planning
- development and design
- delivery
- installation
- maintenance

Lindner

Bahnhofstrasse 29
 94424 Arnstorf
 Germany
 Phone +49(0)8723/20-36 91
 Fax +49(0)8723/20-25 05
 iso.ind@Lindner-Group.com
 www.Lindner-Group.com